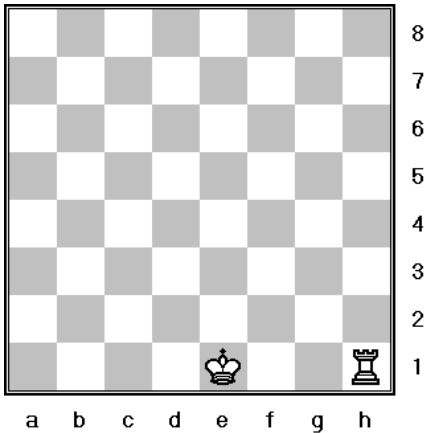
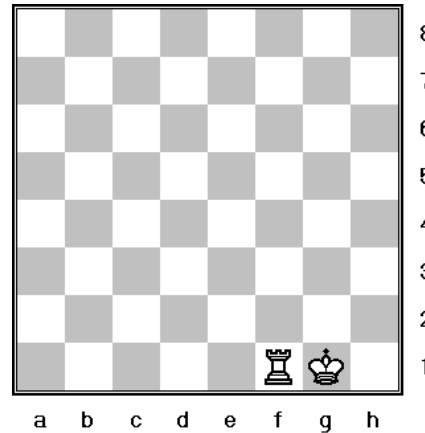


# Castling

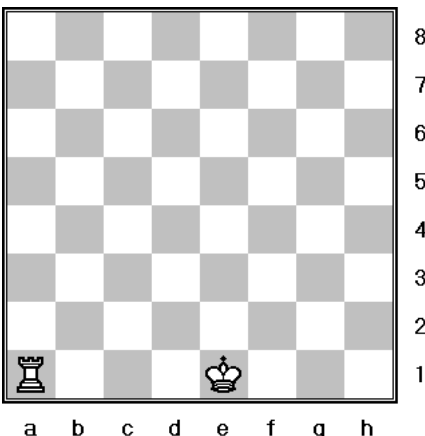
In this lesson we will learn about a special move known as castling. Castling is special because it is the only time that you can move your king more than one square at a time, plus you get to move another piece at the same time. You can do it once in the game. You move your king two squares towards your rook. Then, as part of the same move, the rook jumps over the king and lands on the next square (The squares must be empty of pieces between the king and rook before you can castle). You can castle on either side of the board - the king-side (the side where the kings start - on your right in these diagrams) or the queen-side (the side where the queens start - on your left as seen in the diagrams below).



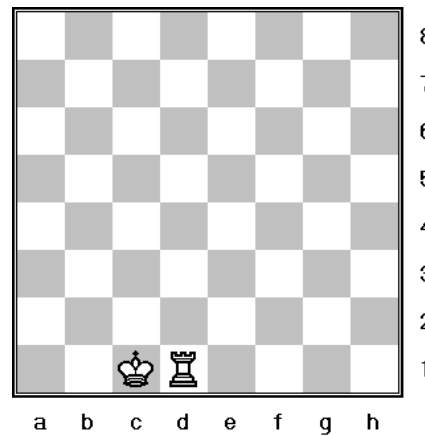
Before castling king-side



After castling king-side



Before castling queen-side

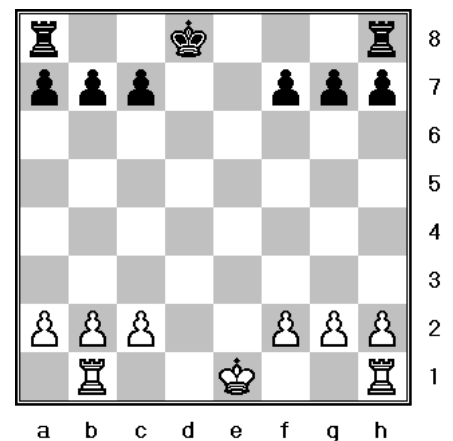


After castling queen-side

You can only castle if your king hasn't moved and with a rook that hasn't moved.

In the diagram to the right Black cannot castle - they have moved their king (it's on the square where the queen started off). Even if they move their king back to its starting square he still cannot castle.

White cannot castle on the queen-side - they have moved their queen's rook. But White can still castle on the king-side.

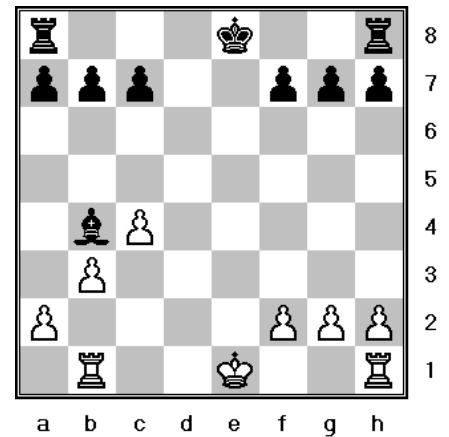


You cannot castle if you are in check.

In this diagram Black has just moved their bishop to put the White king into check.

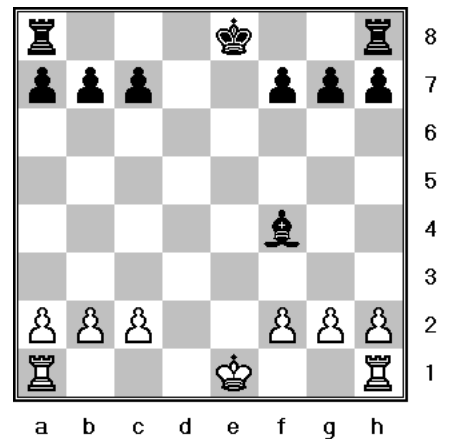
White cannot castle to get out of check.

But, if you've been in check in the past but have not moved your king you can still castle.



You cannot castle into check.

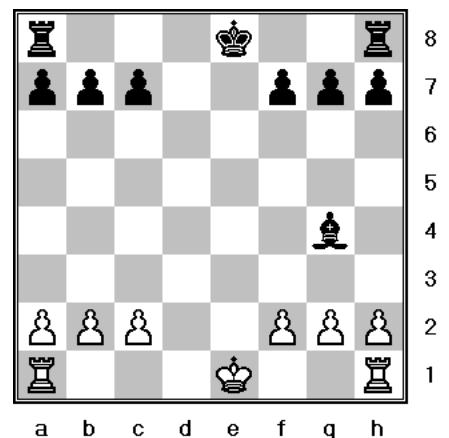
Certainly, White cannot castle on the queen-side as seen in this diagram, because their king would be in check from Black's bishop.



You cannot castle if your king crosses a square which is attacked by an enemy piece.

White cannot castle on the queen-side in this diagram - their king would cross a square that is attacked by Black's bishop.

White could castle on the king-side since there is nothing preventing their king from doing so.



The reason we castle is to get our king out of the open center and to a safer spot behind some pawns. It also helps to connect our rooks which make them more powerful because they are able to work together. We will look more at these ideas in the future.

