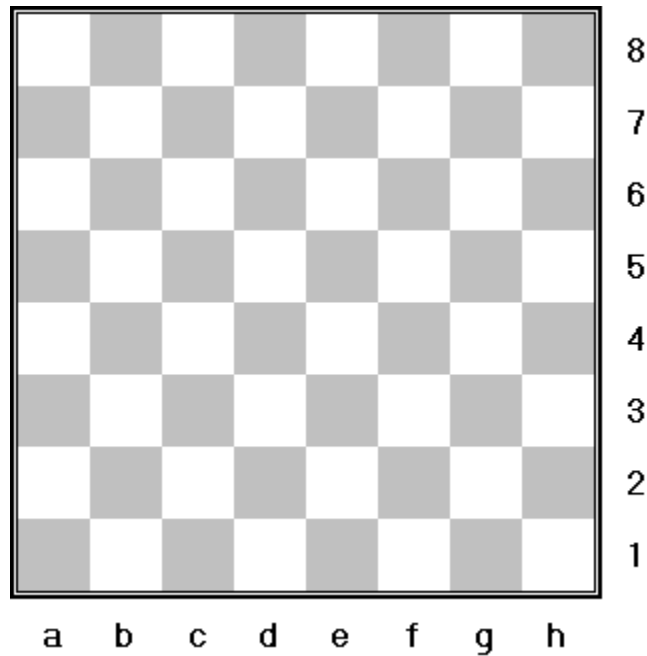


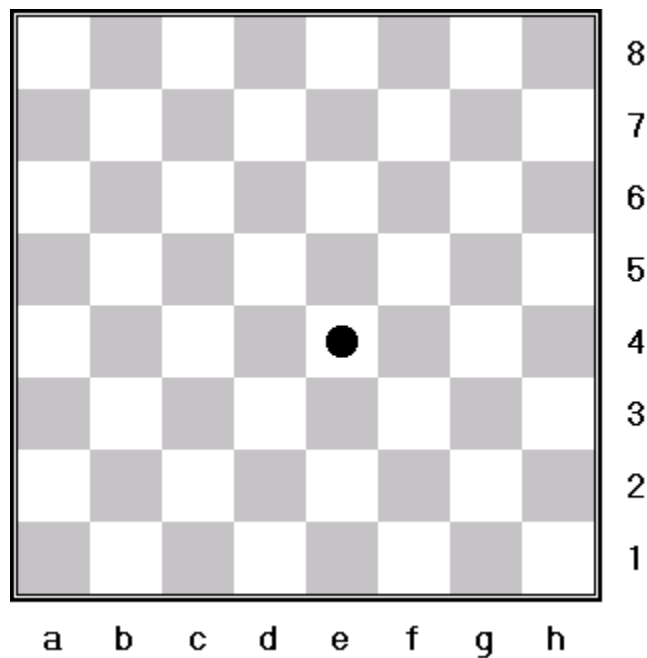
The Chess Board

The diagram below shows an empty chess board. Be sure to have the light square in the bottom far right corner as shown in the diagram. Remember *Light on the Right*.



Coordinates

On the diagram above you probably notice the letters from *a-h* on the bottom of the board and the numbers *1-8* on the side of the board. These letters and numbers are used to identify where pieces are located. It is similar to the game called Battleship.



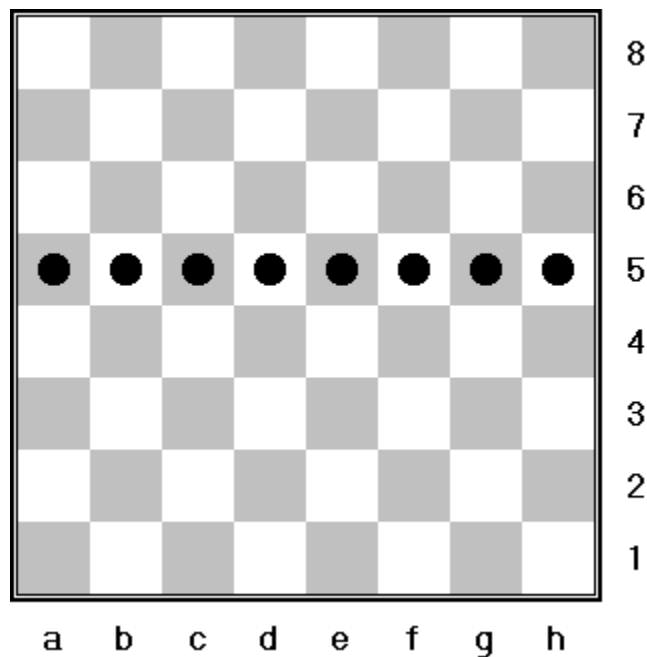
In the above diagram you'll see a dot on a square. To find the coordinates first put your finger on the dot and drag it straight down. You should have landed on the letter *e*.

Now put your finger on the dot and drag it straight to the right side. You should have landed on the number *4*.

In chess, this square is called *e4*. Notice how the letter comes before the number.

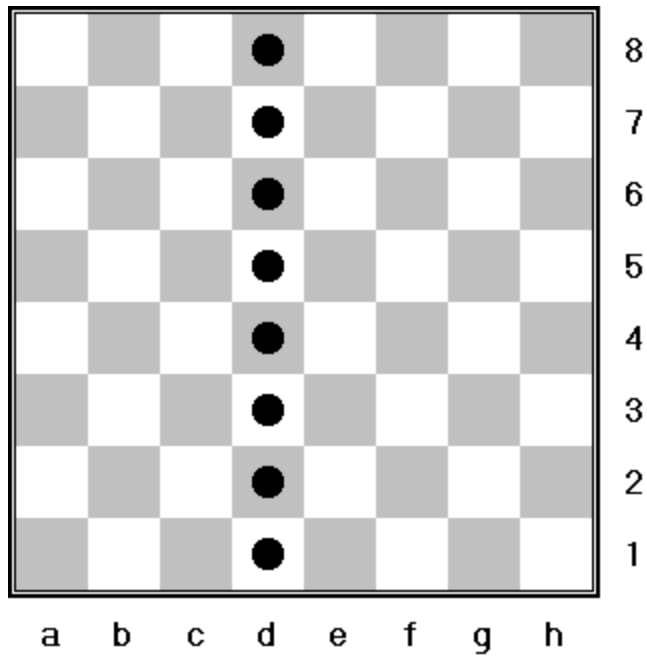
Ranks

The row of squares which go horizontal (or from the left side of the board to the right), are called *ranks*. The diagram below shows the squares of the 5th *rank* marked with dots.



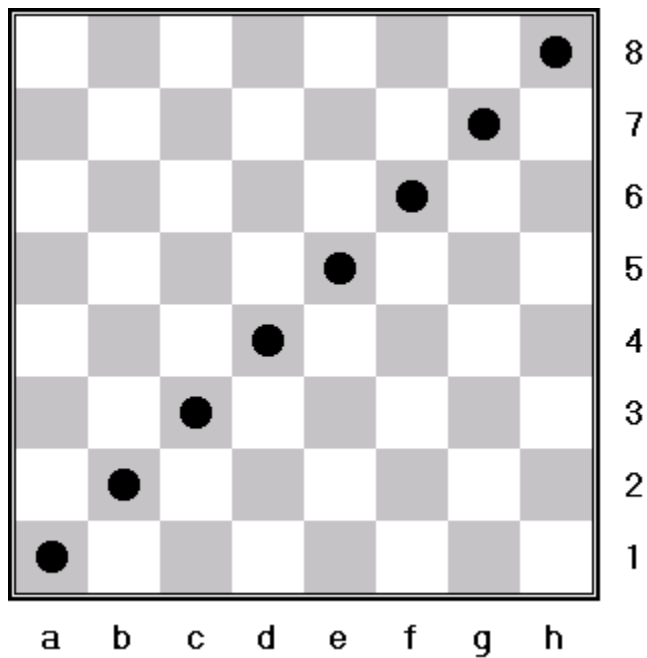
Files

The columns of squares which go vertical (or from the bottom of the board to the top), are called *files*. The diagram below shows the squares of the *c file* marked with dots.



Diagonals

Diagonals are the squares which run diagonally across the board. The diagram below shows the squares of the *a1-h8 diagonal* marked with dots.



Review Quiz

Before moving on you should have a good grasp on the things covered in this section. The following is a brief quiz to help you get more familiar with the chess board.

1. What color is the h1 square?
2. What color is the c5 square?
3. At what square do the f file and the 4th rank meet?
4. At what square do the b file and the 7th rank meet?
5. How many squares are on the d1 to h5 diagonal?
6. How many squares are on the b8 to h2 diagonal?
7. Where does the a8 to h1 diagonal intersect the e file?
8. Where does the b1 to h7 diagonal intersect the d file?