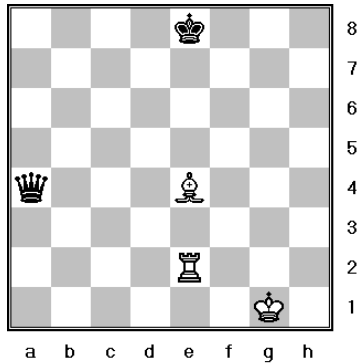


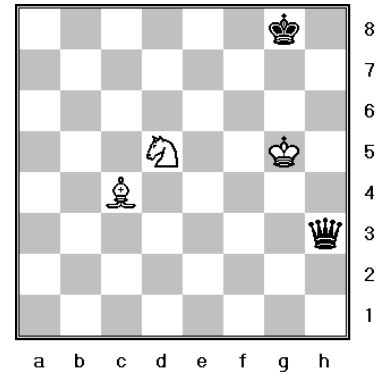
Discovered And Doubled Checks

A discovered check is an attack by a piece that was opened up via another piece's move. A double check is an attack by two pieces at the same time. When this happens the king has to move.

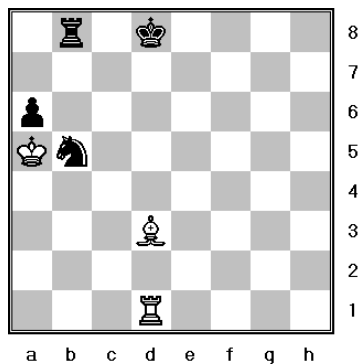
Presently Black is not in check, but when White moves their bishop, the king will be in check by the rook. If White moves their bishop to either c2 or c6 White will also win a queen!



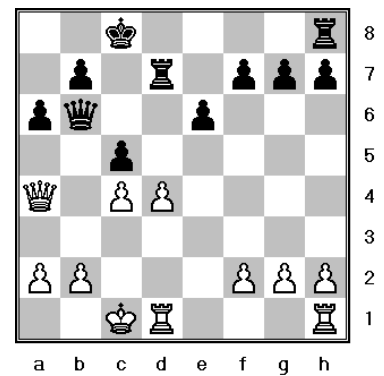
Can you see the discovered check? When White moves their knight to f4 the Black king will be in check and on the next move the knight can capture the queen for free!



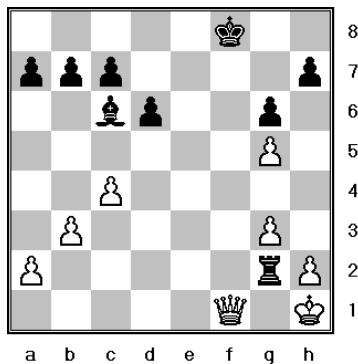
Here White should capture the knight on b5, putting the Black king in check with the rook. Because of this White should win both the Black knight and pawn!



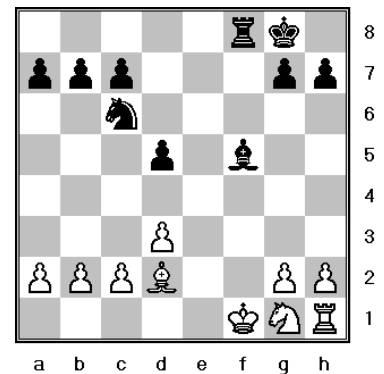
White sacrifices their queen by capturing Black's rook on d7. The king captures the queen. White's pawn on d4 captures the c5 pawn putting the king in check and White's c5 pawn captures the queen!



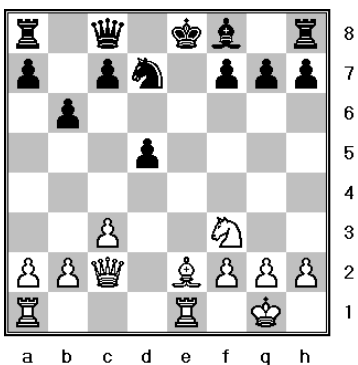
Black's king is in check and must move. Can you find the discovered check? If you said rook to f2, you got it! Moving the rook to f2 puts White's king in check. Black will capture the queen and be a bishop up!



Black to move. Here is a double check that leads to checkmate. Bishop captures d3, putting the king in check. The king must move to e1. Now Black's rook moves to f1 for checkmate!



White to move. White moves their bishop to a6 putting the Black king in check and attack their queen at the same time! On White's next move they capture the queen!



Once again a double check leads to mate. White moves their bishop to g5. The Black king must move to e8. White then moves their rook to d8 for checkmate!

