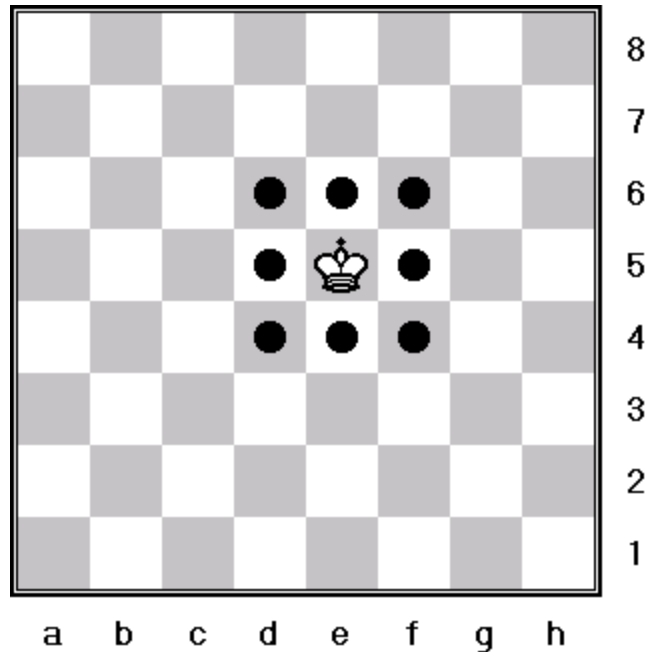


Chess Pieces: The King

What is the king and how does it move?

The *king* is the chess piece seen in the first diagram. The *king* moves only 1 square along the ranks, files, and diagonals of the chess board as indicated by the dots shown in the diagram below.



The *king* can move along the ranks, files, and diagonals if the squares are unoccupied by pieces of its own color. If pieces of the opposing color are blocking squares on a rank, file, or diagonal that your *king* could move to, your *king* can capture that piece and occupy its square.

There are 2 exceptions though. First, the king can never move to a square that is attacked by any of your opponent's pieces. In other words, it cannot move to a square where it could be captured. This is called moving into check. This will be covered in a later lesson.

The second exception is called castling. This will also be covered in a later lesson.

Starting position

On the chess board, *kings* start the game on e1 for white and e8 for black.

