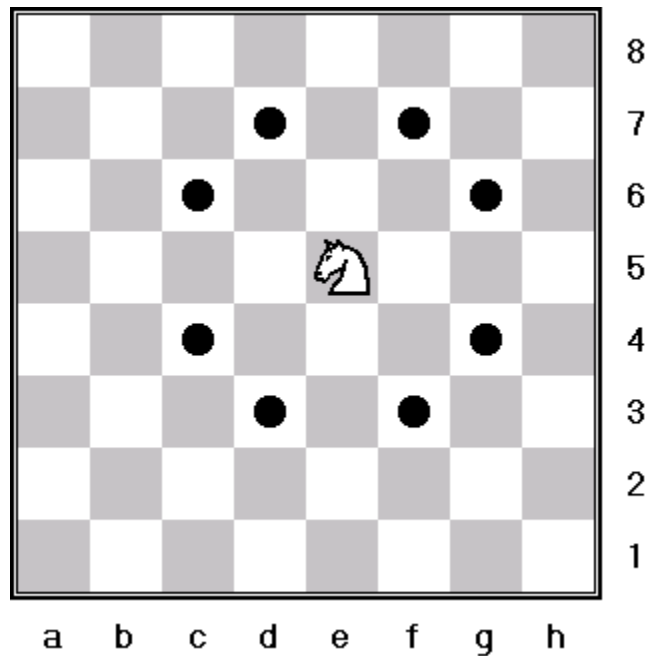


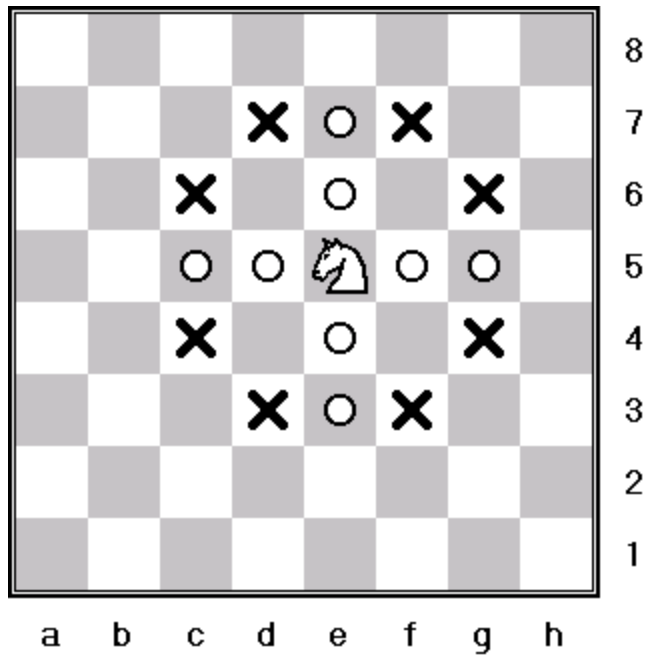
Chess Pieces: The Knight

What is the knight and how does it move?

The *knight* is the chess piece found in the next diagram. The *knight* is unique in that it is the only piece that can jump over another piece. It moves and captures in an L shape. The *knight* cannot capture pieces it jumps over, only the pieces that occupy the square it lands on. The following diagram shows the squares a knight can move to.

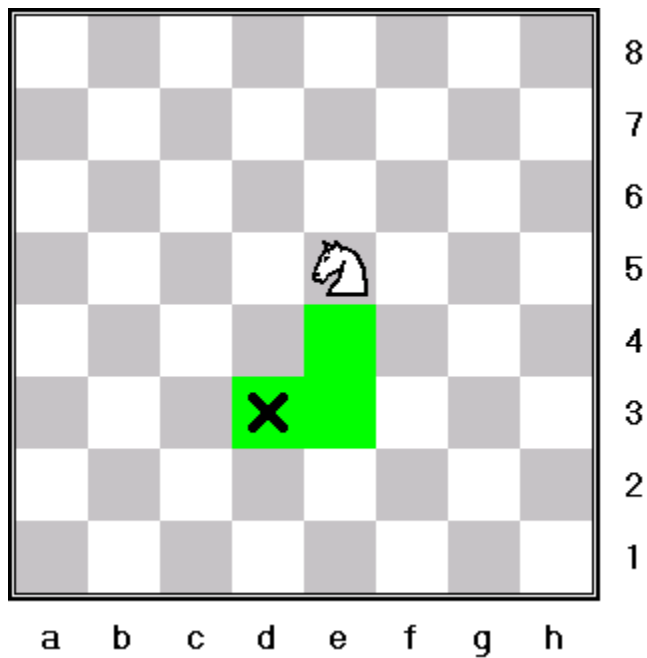


The *knight* moves 2 squares straight to the left or right, or 2 squares straight up or down (indicated by the white dots in the next diagram). To complete the move the *knight* must then move 1 square over to the left or right, or up or down to complete the *knight's* L shaped move as shown in the next diagram with black X's.

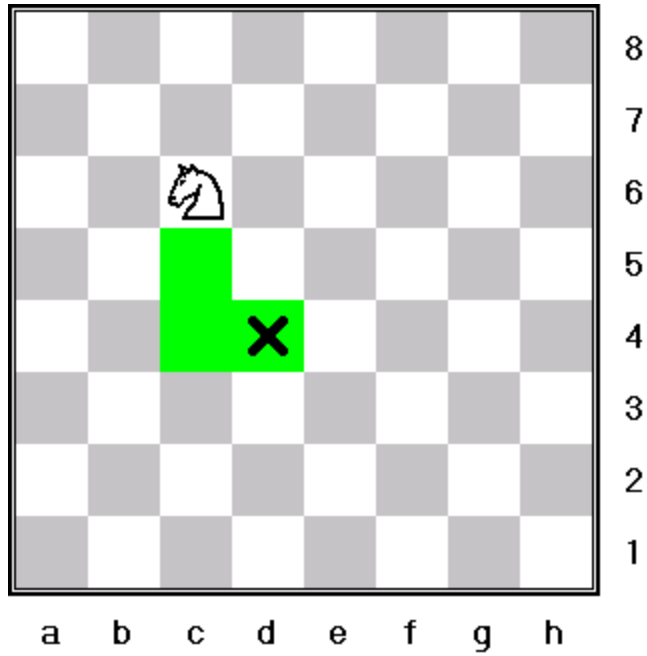


Let's look at some more diagrams for practice.

In the diagram below the *knight* on e5 moves to d3.



In the next diagram the *knight* on c6 moves to d4.



Play a game

Now it is time to play a game with the *knight*s. Set up your chess board with the pieces as shown below. The rules for this game remain the as the previous games.

