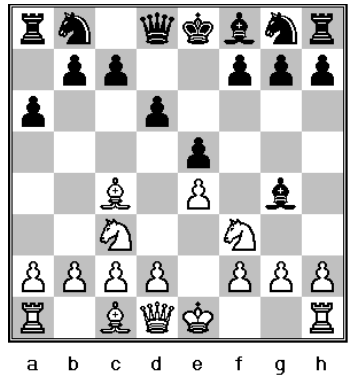


Legal's Mate

The Legal's Mate is a famous example of sacrificing the queen for a greater goal.

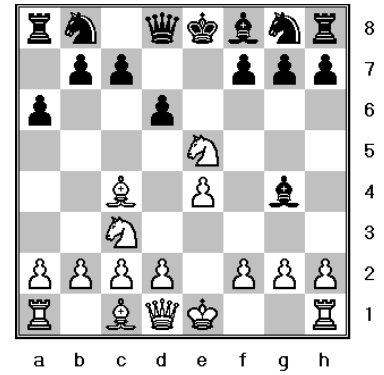
The Legal's Mate starts off with a variation of the king pawn opening.

In this diagram it is White to move. Remember CCT. Can you find how White sacrifices a queen to get checkmate?



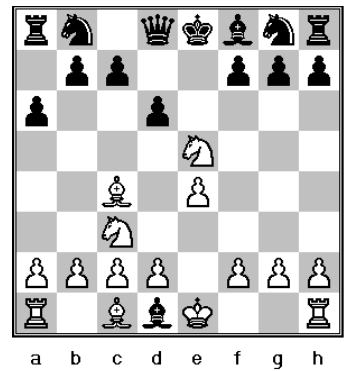
First White captures the e5 pawn with their knight. This exposes White's queen to attack!

White hopes that Black takes the bait.



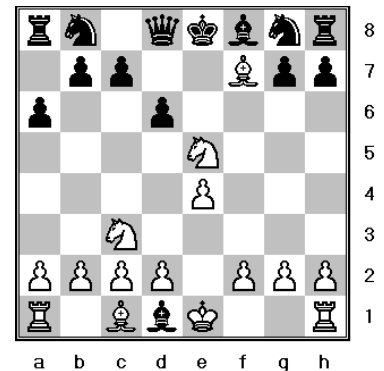
Black can't resist and takes the queen with their bishop.

Now White is ready to complete the mate.



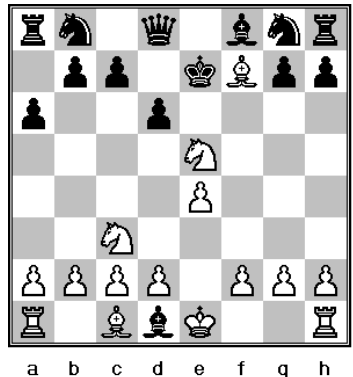
White now capture Black's f7 pawn putting Black in check.

Notice how White didn't capture the pawn with their knight, going for a queen and rook fork. Remember mate is always better!



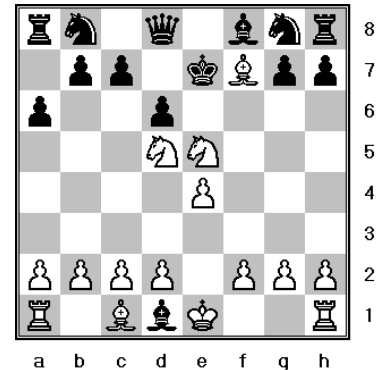
Black has no choice but to get out of check by moving their king to e7.

Black is in serious trouble. Do you see why?



Do you see how White finishes off Black?

If you said knight to d5 then give yourself a hand, because you got it right!



Remember CCT!

The Legal's Mate doesn't happen very often, but it does serve as a lesson in sacrifices and analyzing all the possibilities of a move. If something looks too good to be true, make sure to double check and remember CCT! It could very well be a trap.

