

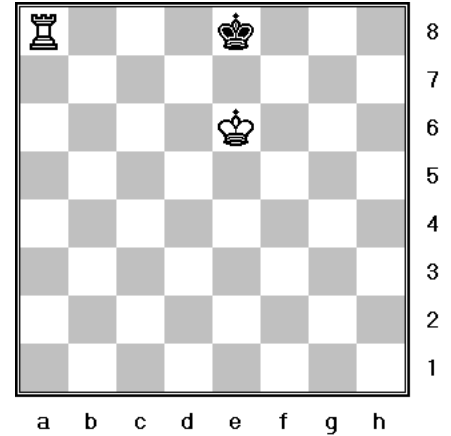
One Rook And Two Kings Checkmate

This is what a basic one rook and two kings checkmate looks like.

Notice that the Black is on the edge of the board.

White's king keeps Black's king so that it cannot move from the edge of the board.

White's rook attacks Black's king, mating him.

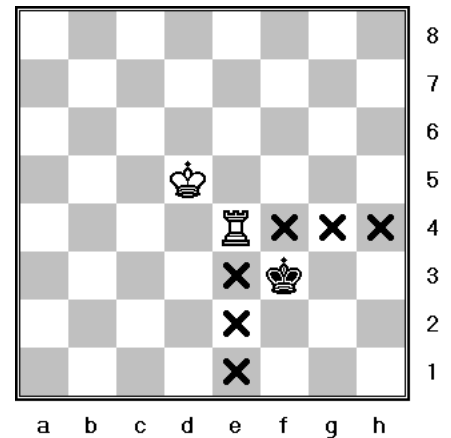


The first thing we do is box in the enemy king.

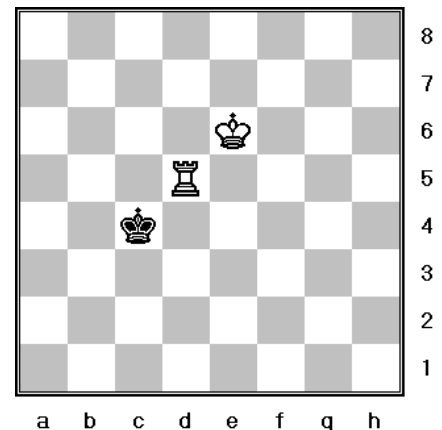
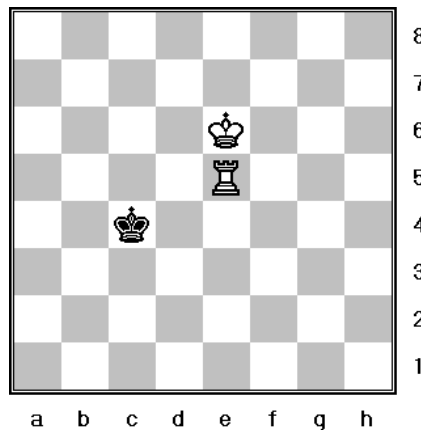
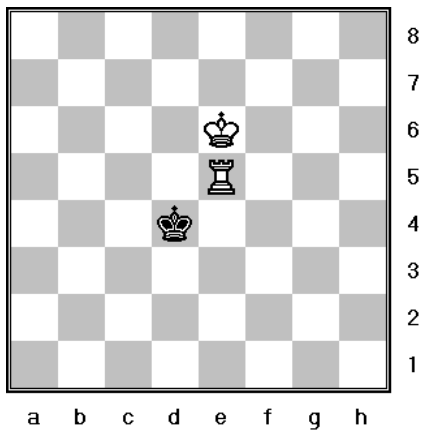
Use your king and rook to create the small box possible on the enemy king.

Notice how White's king guards the rook.

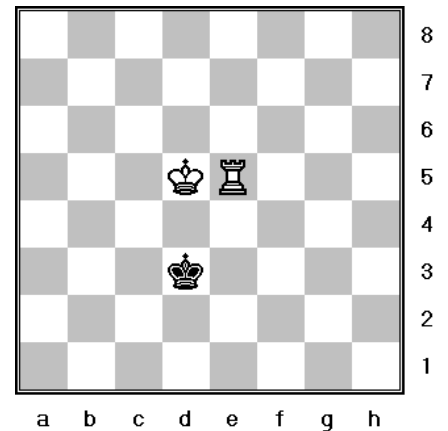
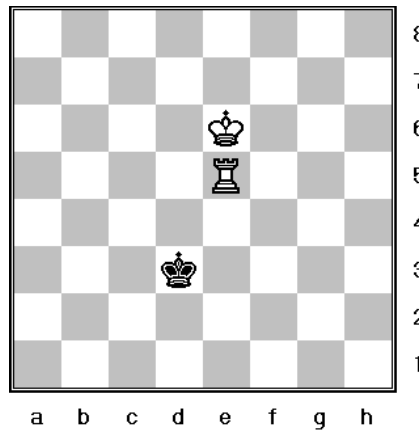
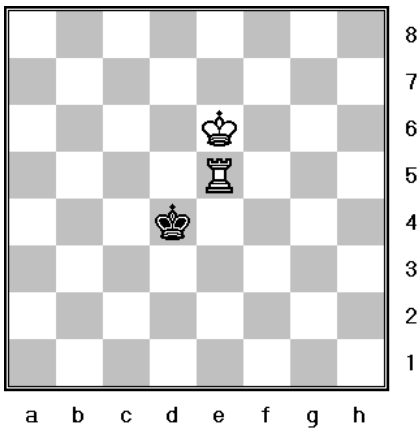
Next we shrink the box. This depends on how the enemy moves their king.



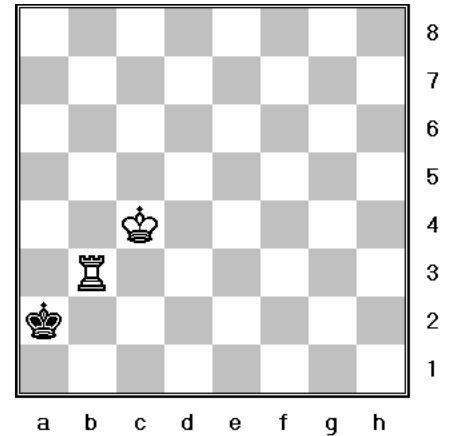
If you can safely move your rook to shrink the box, then do so.



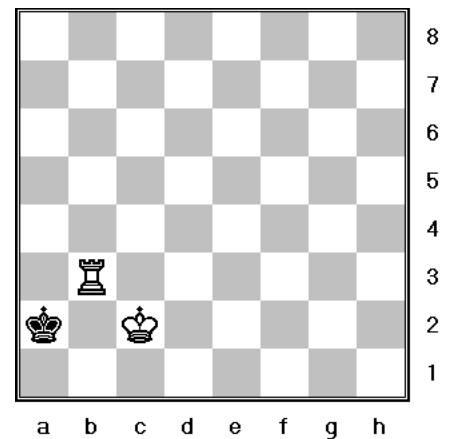
If you cannot move the rook to shrink the box, then move your king next to your rook.



Now we continue to squeeze the enemy king into the corner.



Cut off the escape routes by moving your king down toward the enemy king.



With the enemy king in the corner it is time to move our rook over for checkmate!

If you follow these simple guidelines you are bound to checkmate your opponent quickly and efficiently every time!

