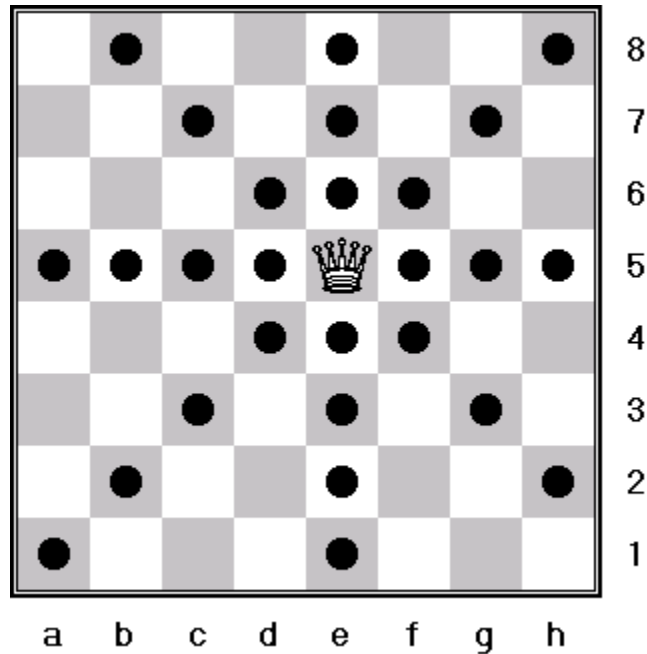


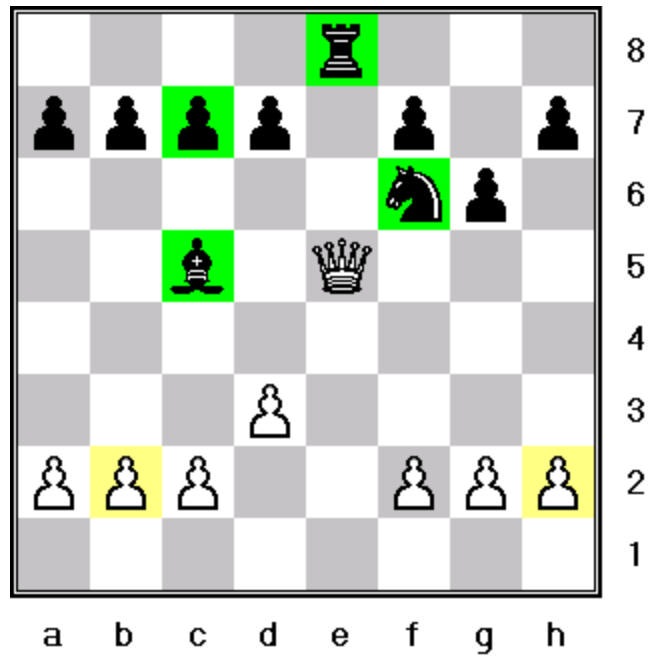
## Chess Pieces: The Queen

### What is the queen and how does it move?

The *queen* is the chess piece seen in the first diagram. The *queen* moves along the ranks, files, and diagonals of the chess board as indicated by the dots shown in the diagram below.



The *queen* can move along the ranks, files, and diagonals if the squares are unoccupied by pieces of its own color. If pieces of the opposing color are blocking squares on a rank, file, or diagonal that your *queen* could move to, your *queen* can capture that piece and occupy it's square. In the next diagram, the white *queen* on e5 is blocked by its own pawns on b2 and h2. The *queen* can only move 2 squares in those directions. Black also has pieces blocking a rank and file (c5 and e8), as well as diagonals (c7 and f6), the *queen* can move along, but unlike the 2 white pawns, the *queen* can capture any one of the black pieces on it's next move.



## Start position

On the chess board, *queens* start the game on d1 for white and d8 for black. Notice that the white queen is on a light colored square and that the black queen is on a dark colored square as seen in the following diagram.

