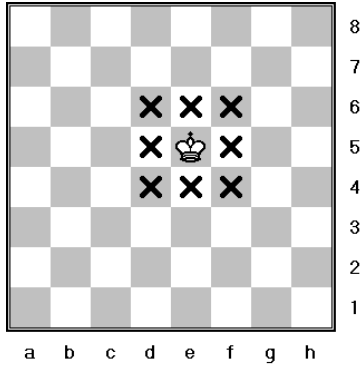
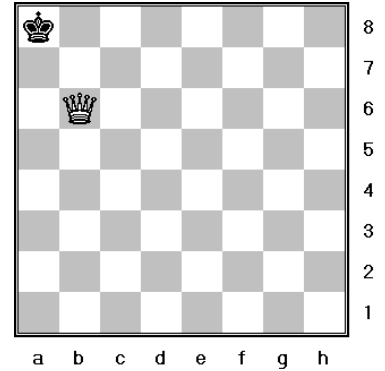


One Queen And Two King Checkmate

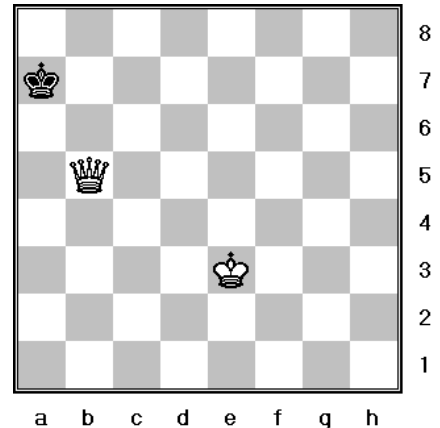
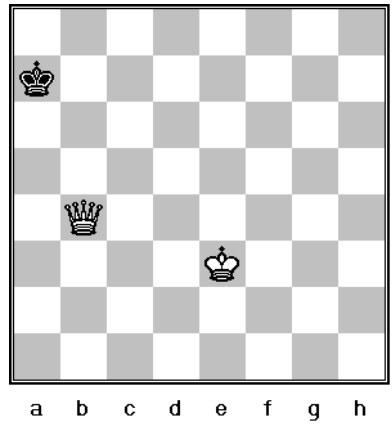
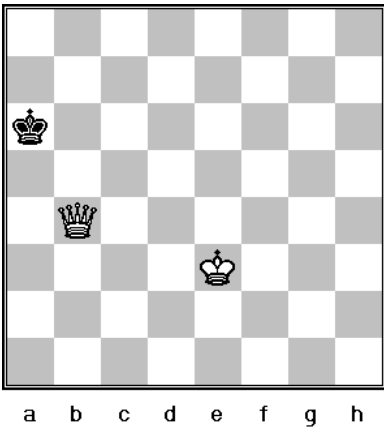
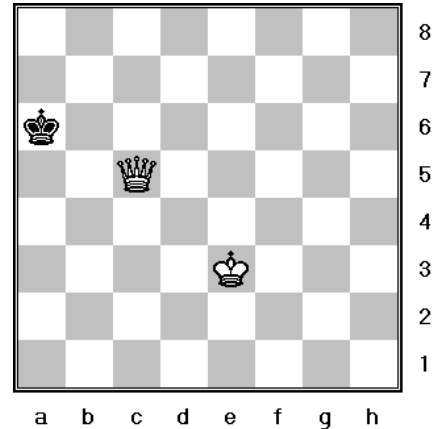
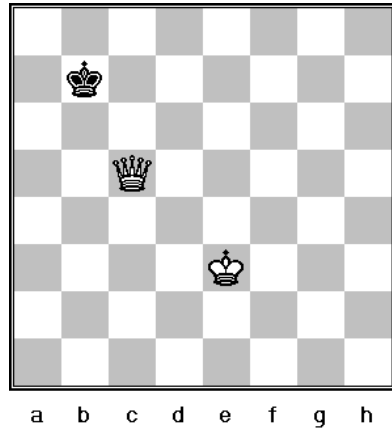
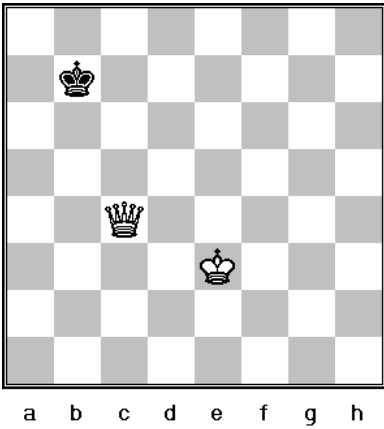
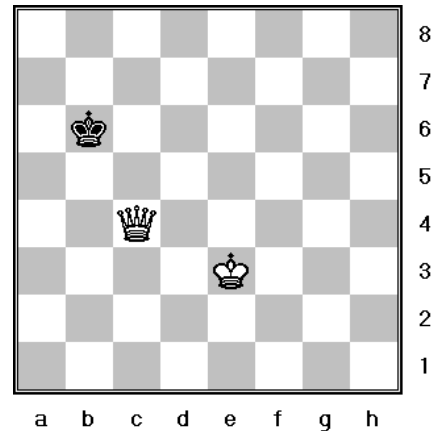
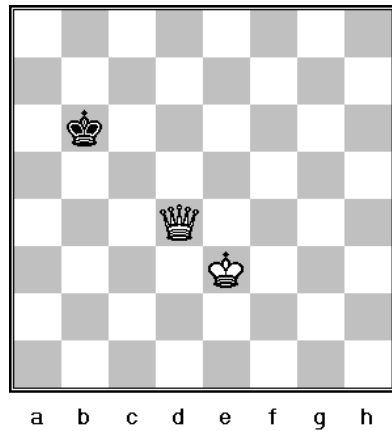
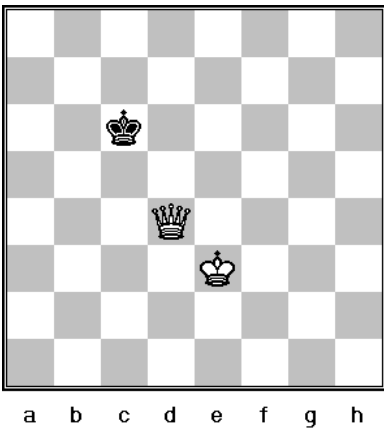
In this type of checkmate the king is activated as a fighting piece. The king creates a force field that the enemy king cannot enter and provides a safe refuge for the queen.



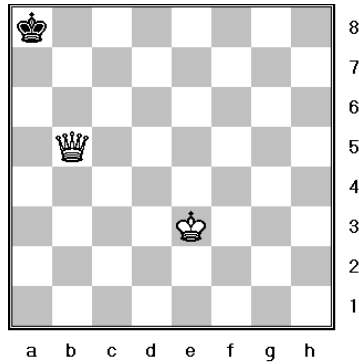
The queen's job is to corral the enemy king pushing him to the corner of the board in a way that if she were a knight, the enemy king would be in check.



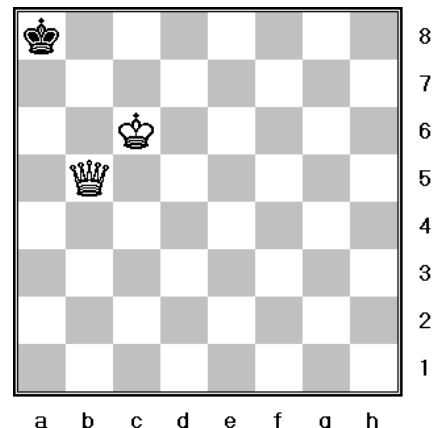
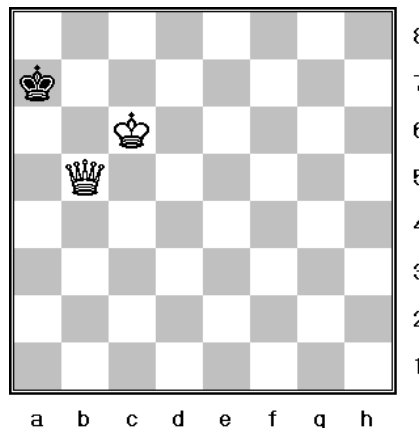
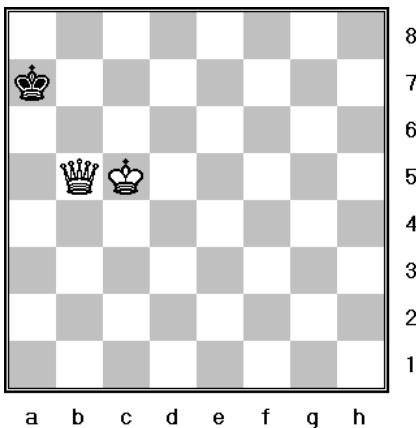
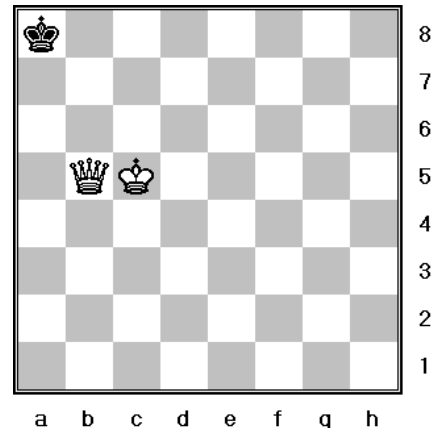
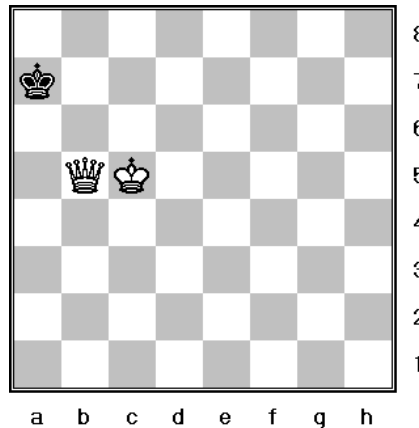
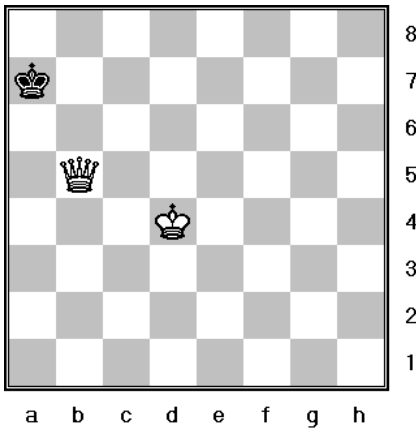
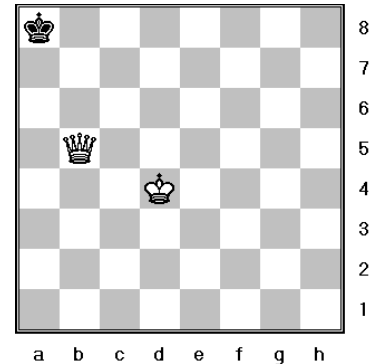
Now let's see it in action with White to move.



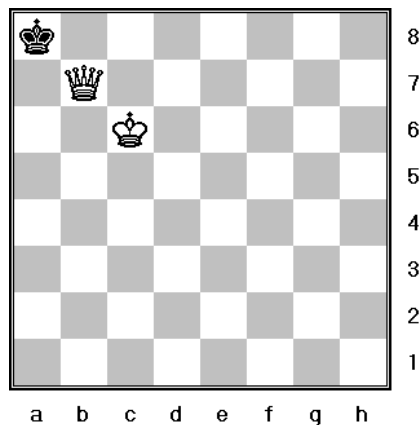
Now in this position, if White moves their queen up one square Black's king will be stalemated! Always be sure that the enemy king has two squares it can run around in.



Now it is time for White to bring their king into the game to finish off Black's king.



Now with White to move and the Black king with no where to run, White moves their queen to b7 for checkmate!



This is a simple and common way to win a game.

Be sure to practice it until you get it down. It will help you to win your game quickly.