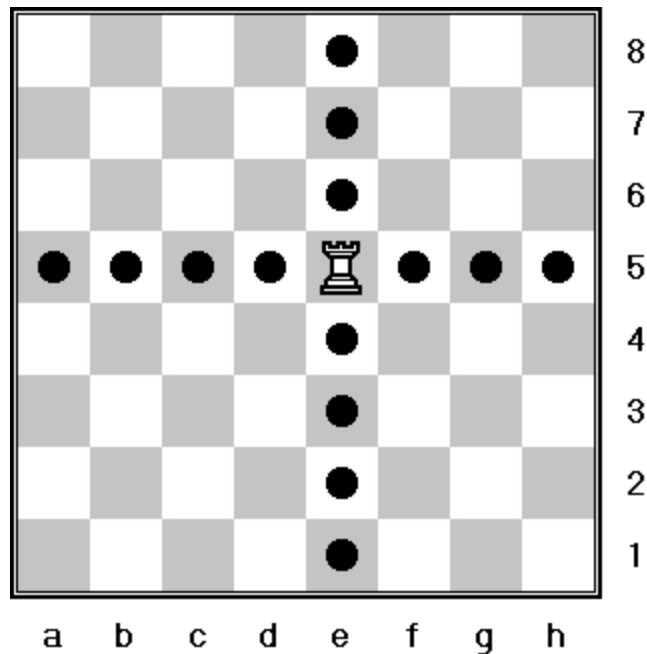


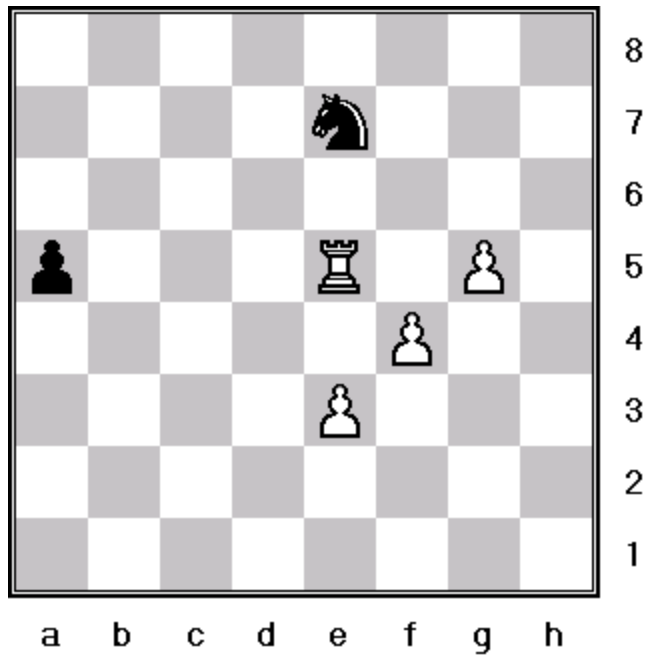
Chess Pieces: The Rook

What is the rook and how does it move?

The *rook* is the chess piece seen in the first diagram. Many new to the game often refer to them as castles. The *rook* moves along the ranks and files of the chess board as shown in the diagram below.



The *rook* can move along the ranks and files if the squares are unoccupied by pieces of its own color. If pieces of the opposing color are blocking squares on a rank or file that your *rook* could move to, your *rook* can capture that piece and occupy its square. In the next diagram, the white *rook* on e5 is blocked by its own pawns on e3 and g5. The *rook* can only move 1 square in those directions; e4 and f5. Black also has pieces blocking a rank and file (a5 and e7), the *rook* can move along, but unlike the 2 white pawns, the *rook* can capture either of the black pieces on its next move.



Starting positions

On the chess board *rooks* start the game on the corner squares as seen in the following diagram.

