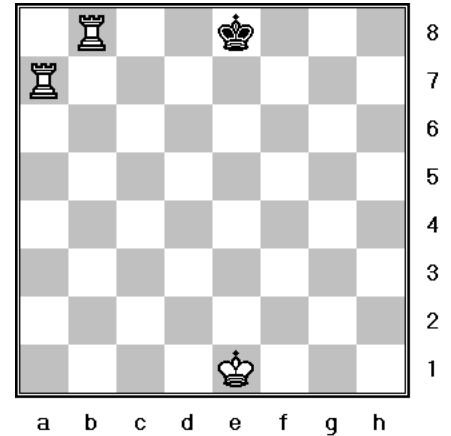


Two Rook Checkmate

The two rook checkmate is one of the simplest checkmates to learn.

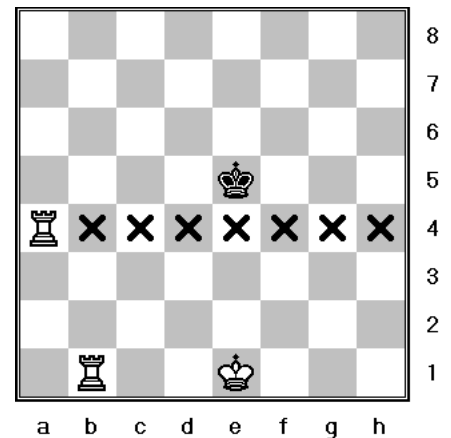
This is the basic position of what a two rook checkmate looks like.

Note how Black's king is on the edge of the board. One rook has the king in check, while the other has cut off any possible way of escape.



The first step in setting up this checkmate is to place one rook so that it creates a force field (as indicated by the x's) that the opponent's king cannot cross as seen in this diagram.

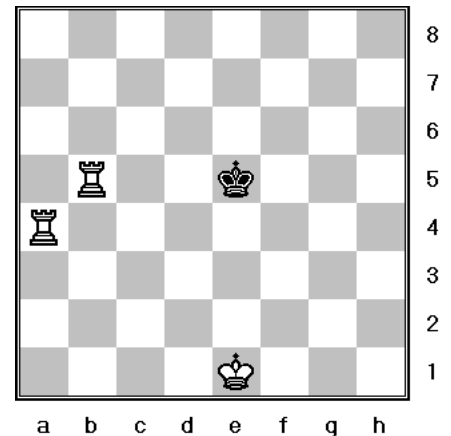
Now Black's king is confined to roam around less than half of the board.

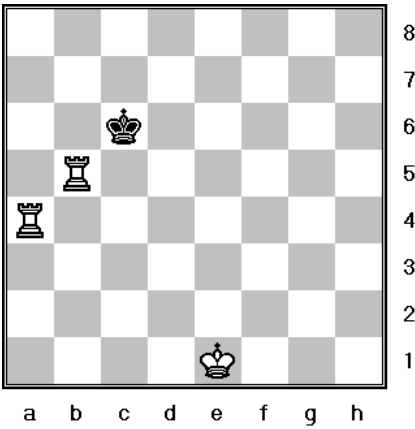


Now we bring the second rook up and put Black's king in check as seen in this diagram.

Black's king can only move up the board. Now the king is one rank closer to the edge of the board, right where we want him.

Now we continue to alternate rooks forcing the king to the edge of the board and checkmate.





Black's king will try to move into position to capture a rook as we see to the left.

When this occurs simply move the attacked rook to the other side of the board keeping the force field in place as seen to the right.

Now we'll finish the checkmate.

